

# Growing Connections:

Transit's role in supporting Livable Communities

**Robert W. Hastings, FAIA**

Agency Architect, TriMet

15th UITP Sustainable Development Commission Meeting

8 - 9 November 2012

Salt Lake City

# Growing Connections:

Transit's role in supporting Livable Communities

**Light Rail? What's that?** Evolution of public participation

**Community:** gathering together to form a shared vision

**Westside MAX:** How a goose stopped Light Rail

**South/North:** Lessons learned

**Airport MAX:** The importance of partnerships

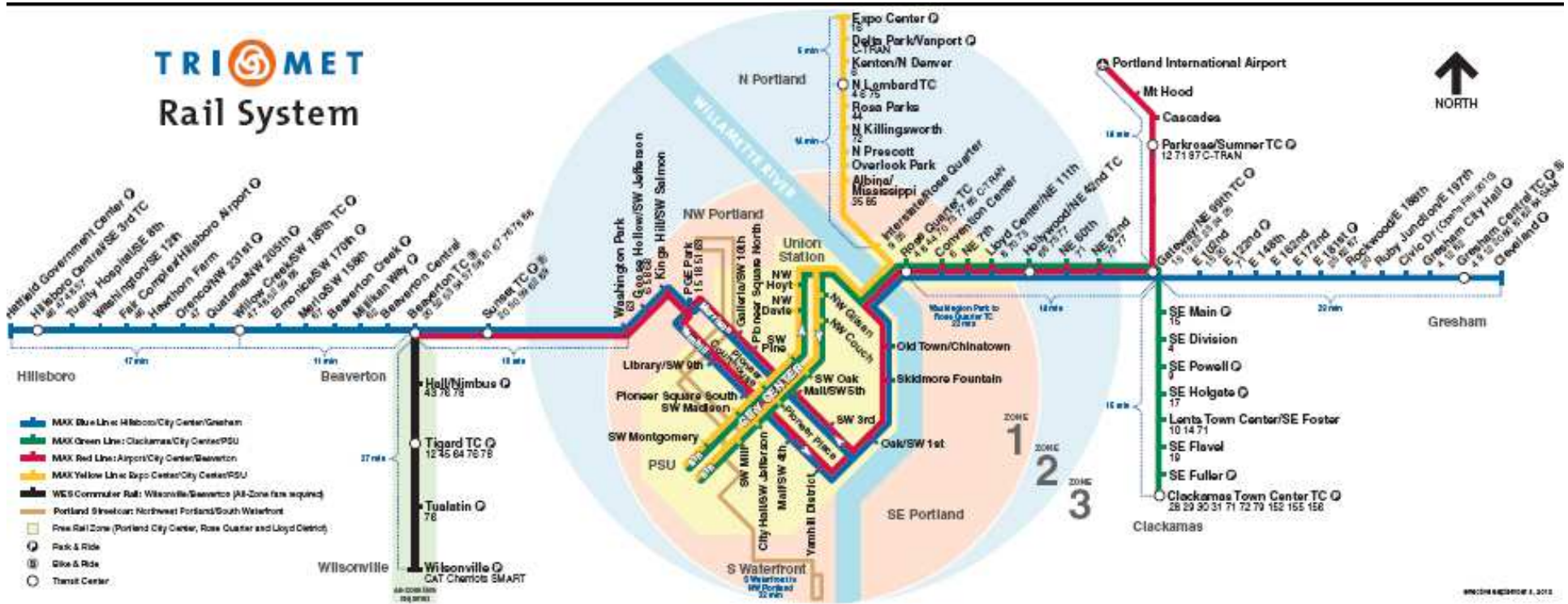
**Interstate MAX:** shift from auto-cratic to demo-cratic

**Portland Mall Revitalization:** contingent relationships

**South Corridor/ I-205:** 35 years in the making

**Portland-Milwaukie Light Rail:** Tom Sawyer had it right

# Light Rail? What's that? Evolution of public participation



# Light Rail? What's that? Evolution of public participation

## 15 mile Light Rail from downtown Portland to Gresham

- Death of the Mt. Hood Freeway galvanized public attention on neighborhoods
- MAX-One of the first Light Rail alignments in the country



# Light Rail? What's that? Evolution of public participation

## 15 mile Light Rail from downtown Portland to Gresham

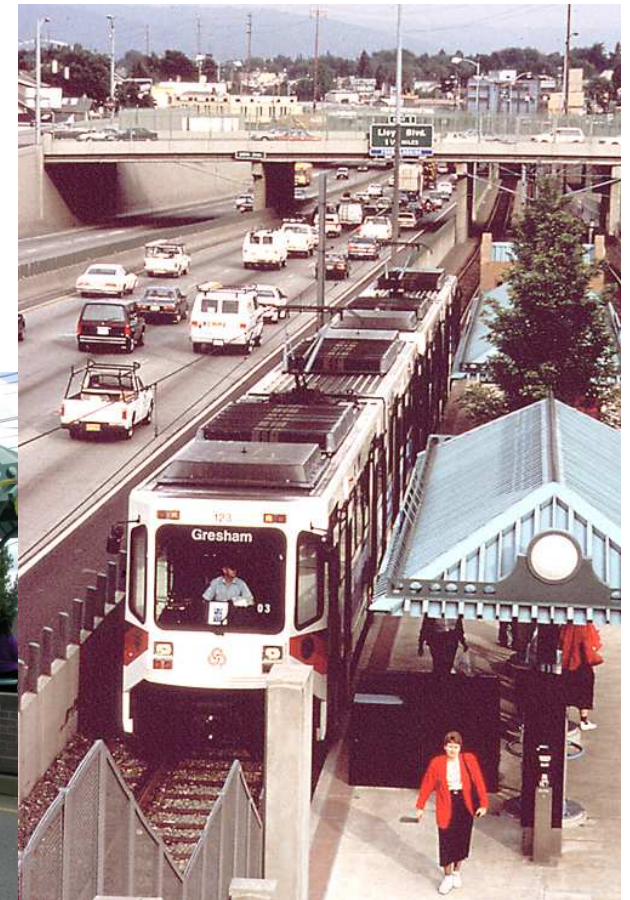
- Banfield alignment precluded direct impact on neighborhoods: Hollywood, 82<sup>nd</sup> Avenue, Gateway.
- East Burnside Street alignment- directly impacts vehicular road, and adjacent residential and commercial areas
- City of Gresham- 'not in *our* downtown' Oops!



# Light Rail? What's that? Evolution of public participation

**Architectural form** expresses 'Train Station' tradition in east county, urban circulator in downtown

- Need for direct public involvement & initial community outreach



**Community:** gathering together to form a shared vision

### 1<sup>st</sup> Railvolution- 1989

- Series of outreach and advocacy events geared towards developing real advocates for the Portland metropolitan region's MAX Light Rail System
- Leveraging community interest, desire for inclusion







# Westside MAX: How a goose stopped Light Rail

## 18 mile, deep tunnel, massive project

- Vivid memories of early light rail construction
- Project stimulates active citizen involvement



# Westside MAX: How a goose stopped Light Rail

## 18 mile, deep tunnel, massive project

- Tipping point reached in Goose Hollow Neighborhood
- Community won extra station and streetscape enhancements



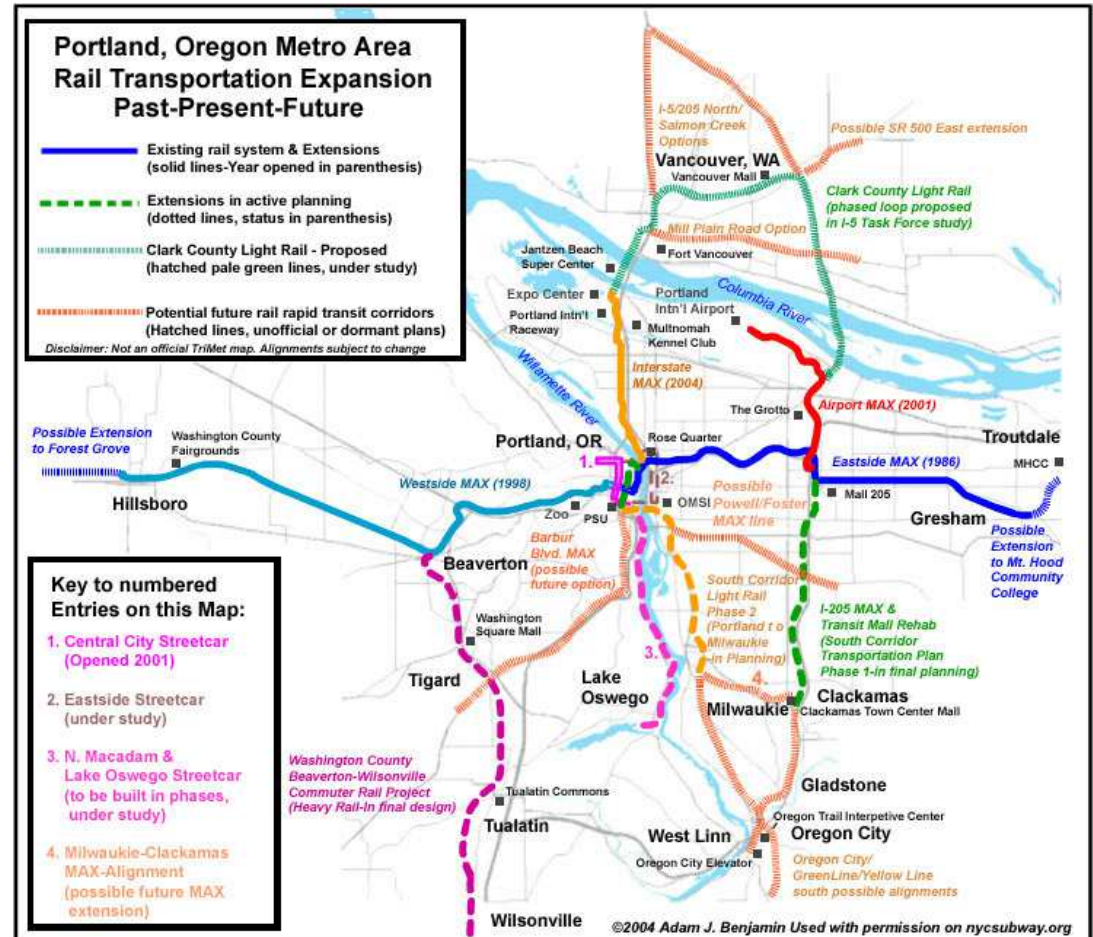
Light rail serves Urban Design and Transit Oriented Development



# South/North: Lessons learned

## Highly ambitious Bi-state, Clackamas County to Clark County

- Initial high level of Portland support, but
- Necessitated public referendum; failed statewide
- A chorus of 'hell no'
- Vancouver, WA- we're not Portland's bedroom!
- Milwaukie, OR- not in my back yard!
- Voted out Milwaukie's Mayor and City Council members



## South/North: Lessons learned

### Highly ambitious Bi-state, Clackamas County to Clark County

#### Lesson Learned:

- Alignment through the community requires early & continuous support
- Public funding referendums are very difficult!
- TOD isn't well understood, density is feared



# Airport MAX: The importance of partnerships

## 5.5 Mile alignment to PDX

- Power of Partnerships: public and private
- City of Portland, Port of Portland, TriMet, and Bechtel Corp.
- No public vote was required
- Leveraged public land for private development,
- But development didn't achieve density, mix-use objectives
- Suburban type retail, lodging, dining



# Airport MAX: The importance of partnerships

## 5.5 Mile alignment to PDX

- Opened the weekend before 9/11.
- Quickly adopted by public to downtown Portland
- Connects PDX to Silicon Forest.



# Interstate **MAX**: shift from auto-cratic to demo-cratic

## Aftermath of South/North Requires New Thinking

- Alignment on old Highway 99- Interstate Avenue
- Creation of Urban Renewal District for local funding match
- Mayor's manta- "No business goes out-of-business"
- Innovations in Business Support, Construction, Station design, and art

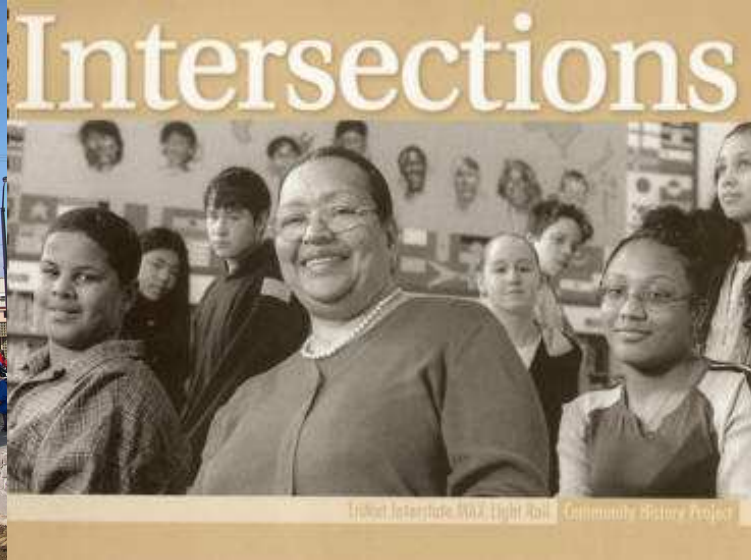


# Interstate MAX: shift from auto-cratic to demo-cratic

## Aftermath of South/North Requires New Thinking



- Project creates infrastructure of citizen involvement & decision making
- Station reflect community identity and culture
- Innovations save time & money, introduces sustainable practices
- Serves follow-on community supported development
- Opens ahead of schedule, and under budget!!!!

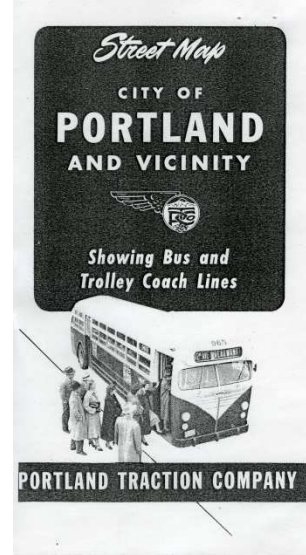
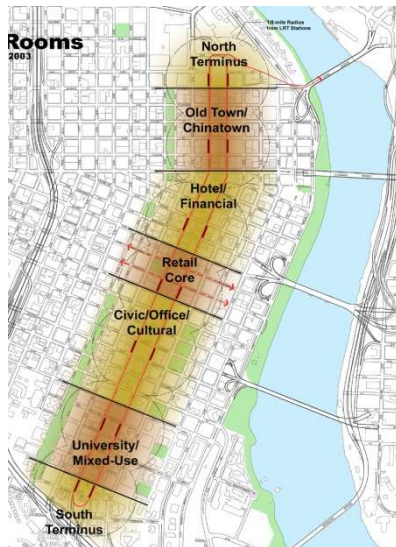




# Portland Mall Revitalization: contingent relationships

**Manifestation of the community's will** to create a multi-modal street that enhanced livability; create a 'Great Street' through all of downtown

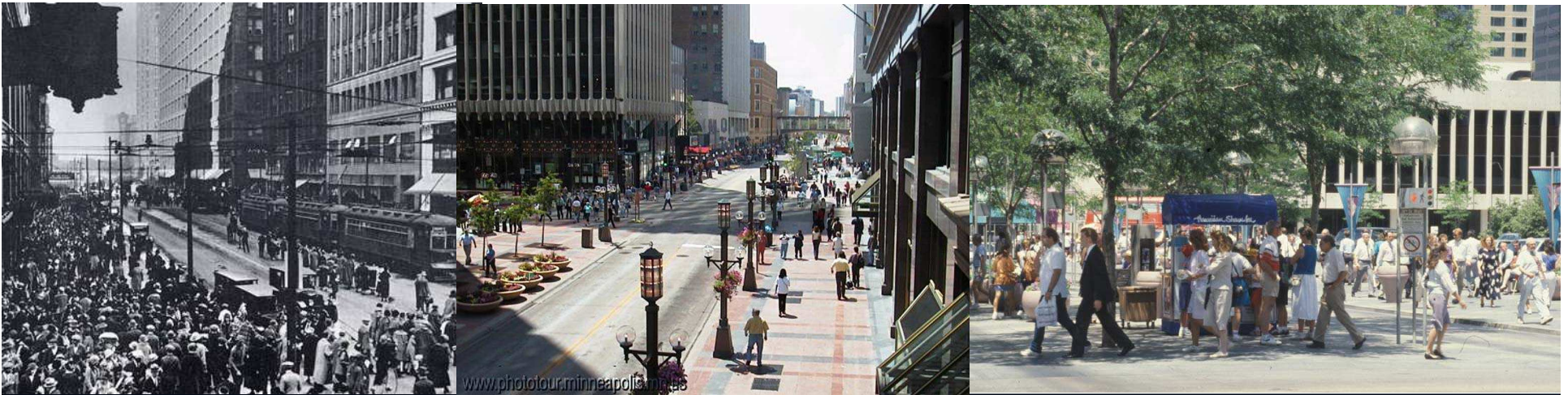
- Station as Place- System elements within particular streetscape
- Urban Rooms- Streetscape reinforces the urban characteristics
- Convey the quality, character and aspirations that distinguish the community.



# Portland Mall Revitalization: contingent relationships

## 'Great Street' Principles-

- Great streets are not about buildings and streets. They are about the people who use them now and will use them in the future.
- Reflecting the best features of the surrounding community.
- Other defining characteristics of great streets:
  - the ability to attract, stimulate and sustain desirable activity
  - balance diverse transportation modes
  - instill a sense of stewardship by the businesses and residents located on and near the street front



# Portland Mall Revitalization: contingent relationships

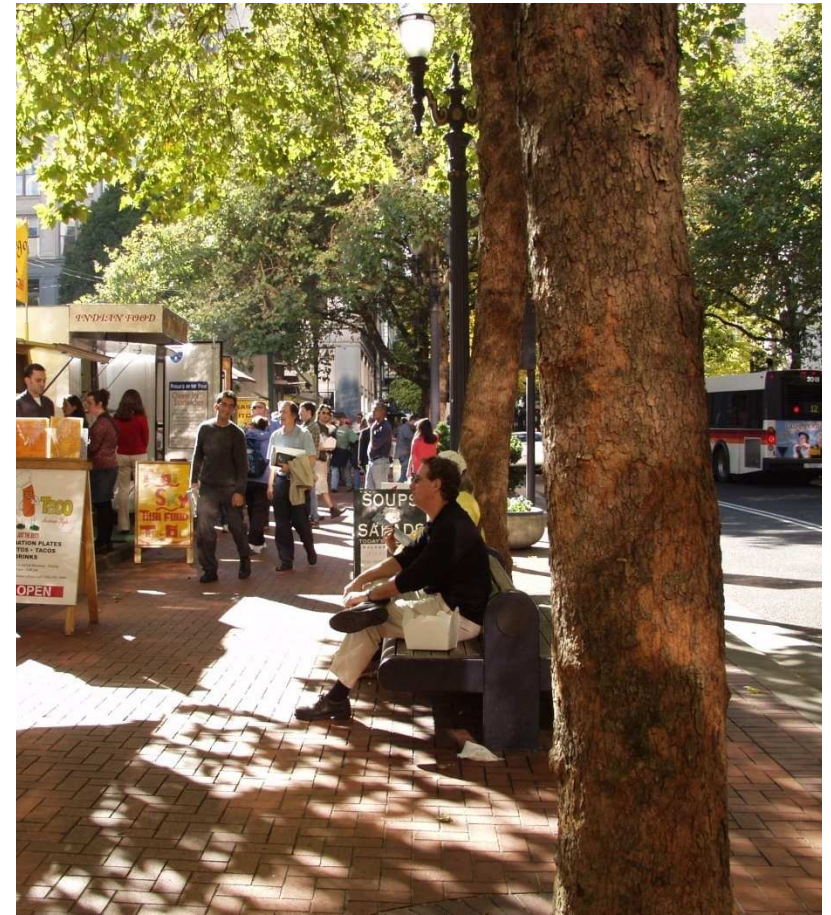
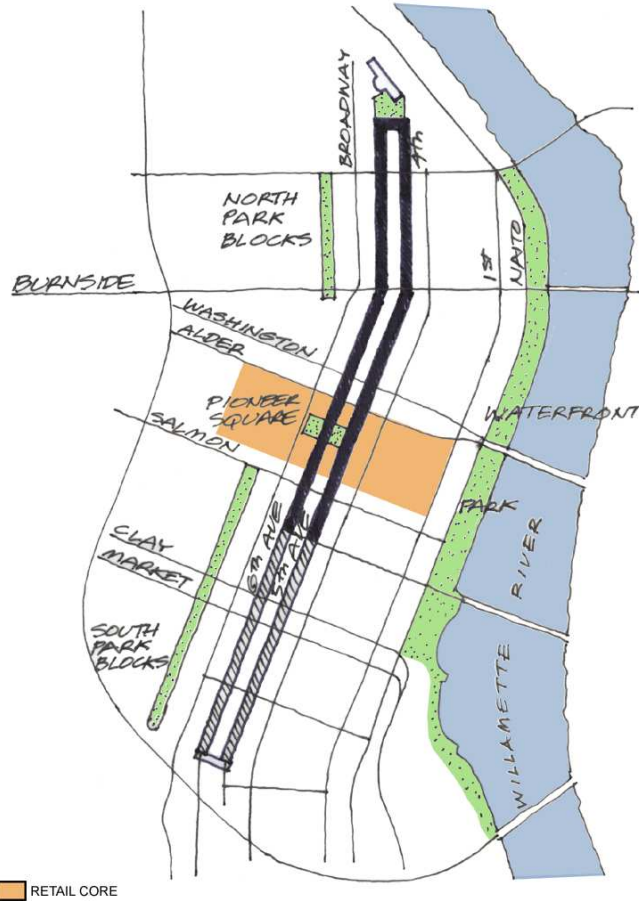
## Portland Mall Revitalization: 'Great Streets Observations

- Reveal the activities and qualities that distinguish the city
- Accommodate all modes without compromise
- Require proper behavior of all activities
- Those who manage activities also sustain the street
- Establish and maintain a physical quality that inspires all who use it



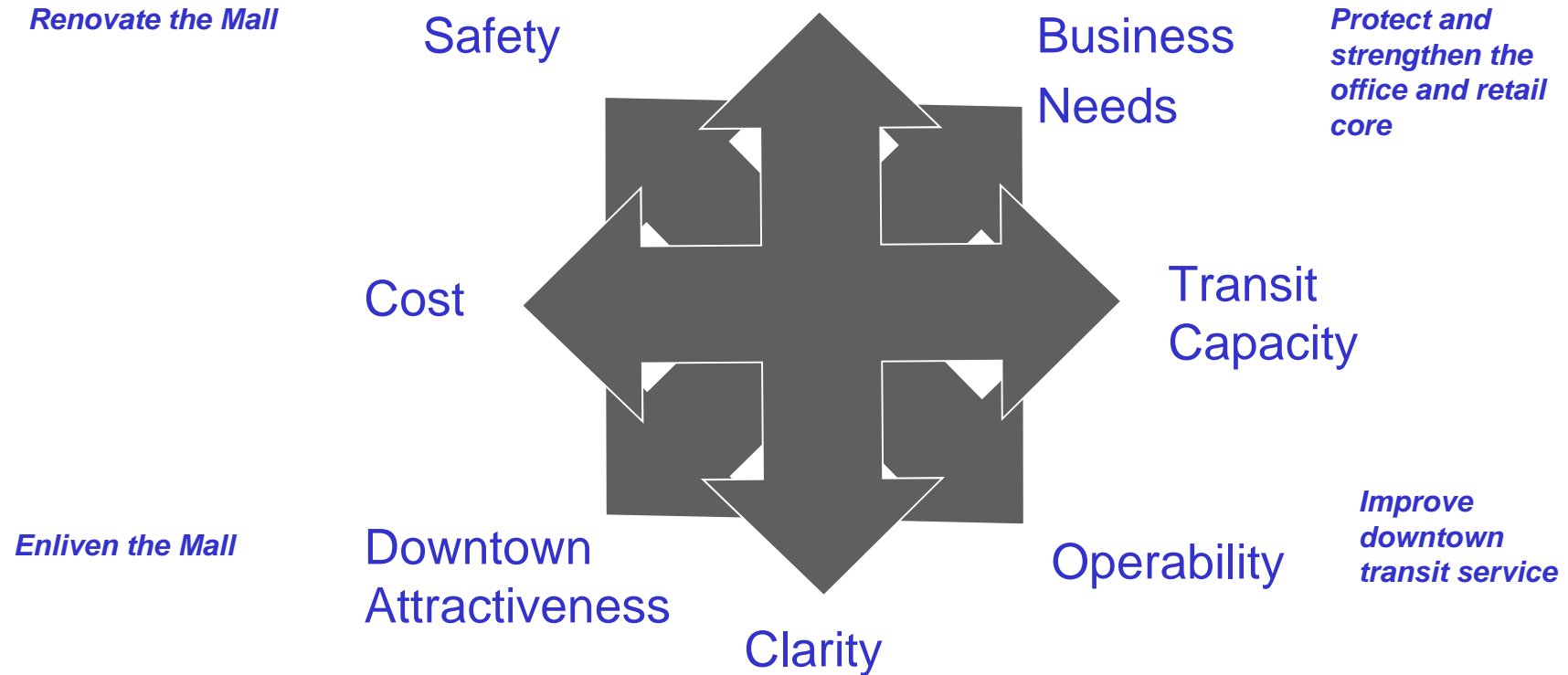
# Portland Mall Revitalization: contingent relationships

Portland Mall: a Great Street



# Portland Mall Revitalization: contingent relationships

## Portland Mall Revitalization: The Making of 'Great Streets'



## Portland Mall Revitalization: contingent relationships

# Portland Mall Revitalization: The Making of 'Great Streets'

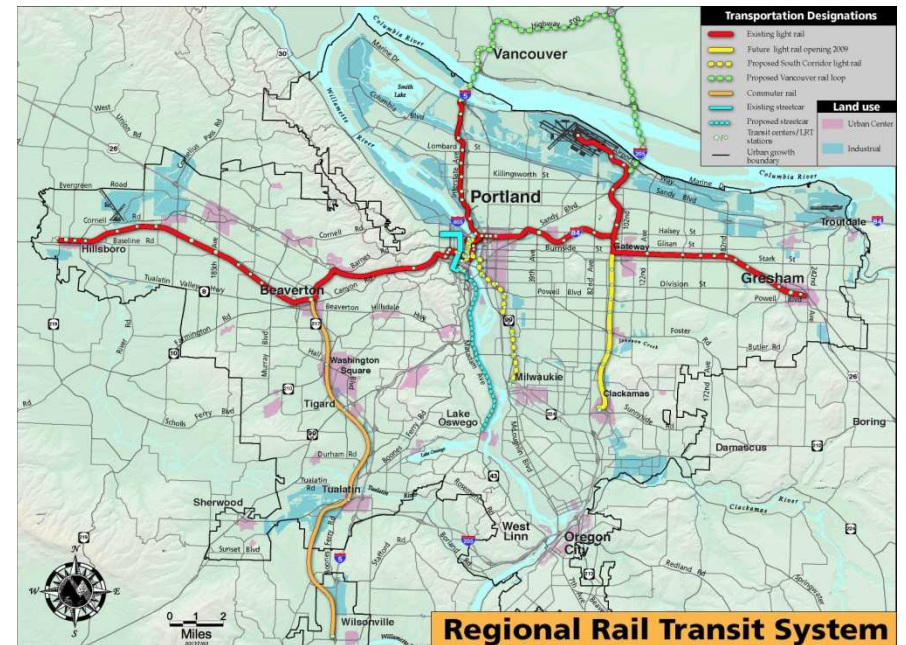
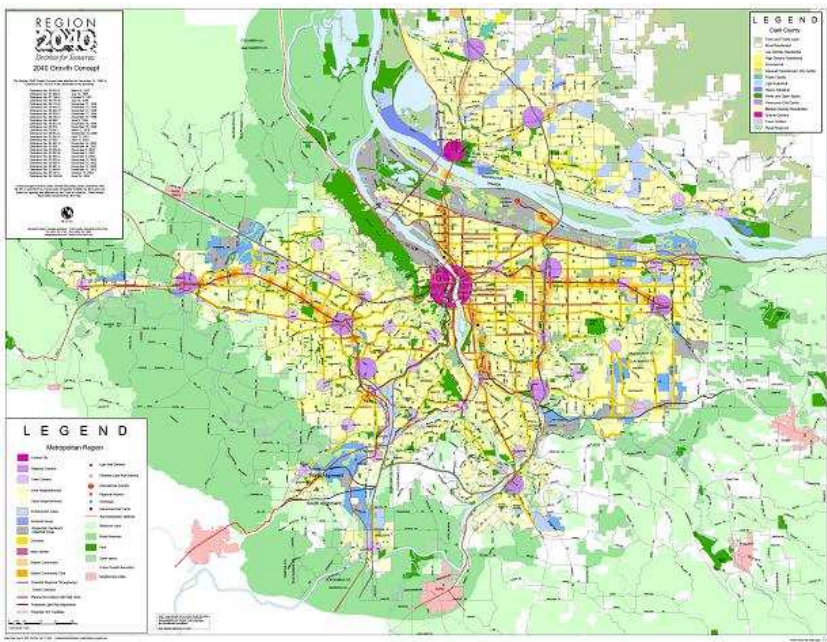
- Reveal the activities and qualities that distinguish the city
- Accommodate all modes without compromise
- Require proper behavior of all activities
- Those who manage activities also sustain the street
- Establish and maintain a physical quality that inspires all who use it



# South Corridor/ I-205: 35 years in the making

## 8.3 mile along I-205 freeway: uses land dedicated for transit in 1974

- Connecting into suburban neighborhoods
- Reduces cross town bus routes
- Provide limited Park & Ride
- Includes upgrade/extension of multi-modal path
- Reinforces regional bicycle circulation: Springwater Corridor
- Leverages Neighborhood groups, citizen involvement



## South Corridor/ I-205: 35 years in the making

**8.3 mile along I-205 freeway:** uses land dedicated for transit in 1974

- Follow-on Planning & Development- Lents Town Center
- Allows for Town Center concept at Clackamas TC





## Portland-Milwaukie Light Rail: Tom Sawyer had it right

“Tom appeared on the sidewalk with a bucket of whitewash and a long-handled brush. He surveyed the fence, and all gladness left him and a deep melancholy settled down upon his spirit. Thirty yards of board fence nine feet high. Life to him seemed hollow, and existence but a burden.”

“Oh come, now, you don’t mean to let on that you like it?”

The brush continued to move.

“Like it? Well I don’t see why I oughtn’t to like it. Does a boy get a chance to whitewash a fence every day?”

That put the thing in a new light. Ben stopped nibbling his apple. Tom swept his brush daintily back and forth—stepped back to note the effect—added a touch here and there—criticized the effect again—Ben watching every move and getting more and more interested, more and more absorbed.

Presently he said:

“Say, Tom, let me whitewash a little.”

## Portland-Milwaukie Light Rail: Tom Sawyer had it right

“He had discovered a great law of human action, without knowing it — namely, that in order to make a man or a boy covet a thing, it is only necessary to make the thing difficult to obtain.”

“Work consists of whatever a body is obliged to do, and. Play consists of whatever a body is not obliged to do.”

### The Adventures of Tom Sawyer



# Portland-Milwaukie Light Rail: Tom Sawyer had it right

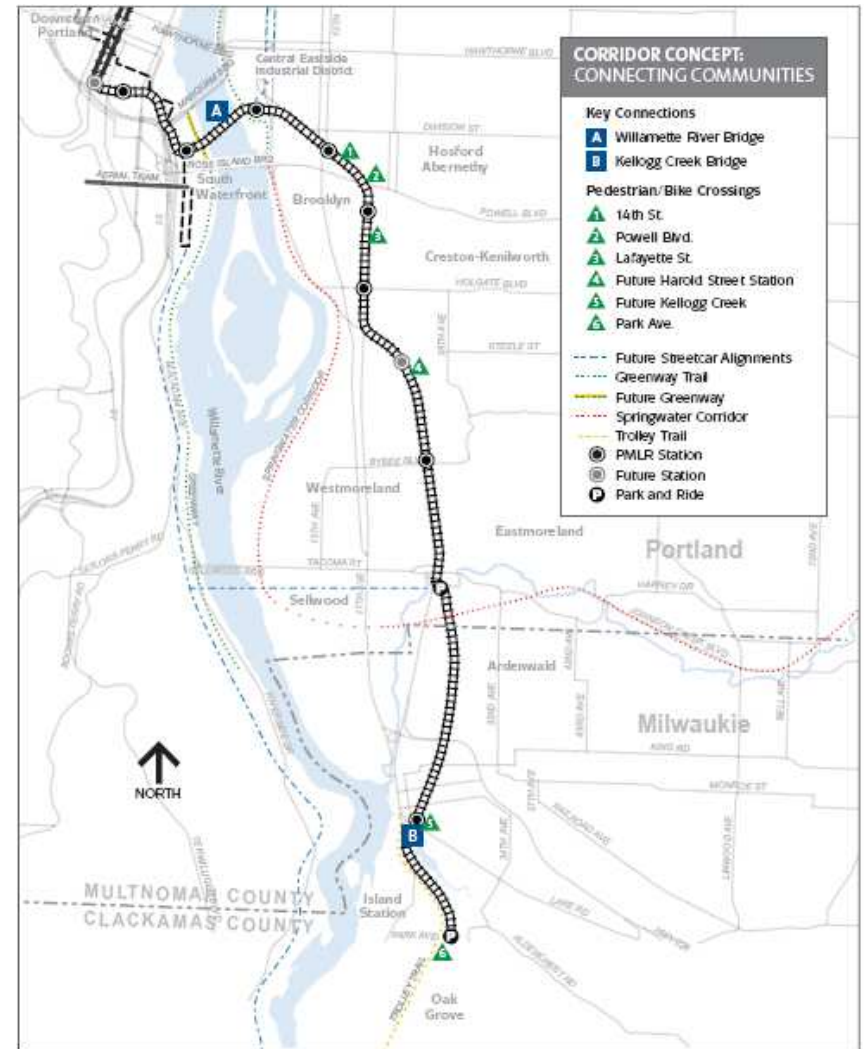
**Creating a Shared Vision-** Transit is the convener of public, private, and community based planning.

- Messy vitality
- Difficult
- Open source
- democratic* (small 'd')

## **Possibilities for Neighborhoods:**

Transit alignment and station are the “What and Where”

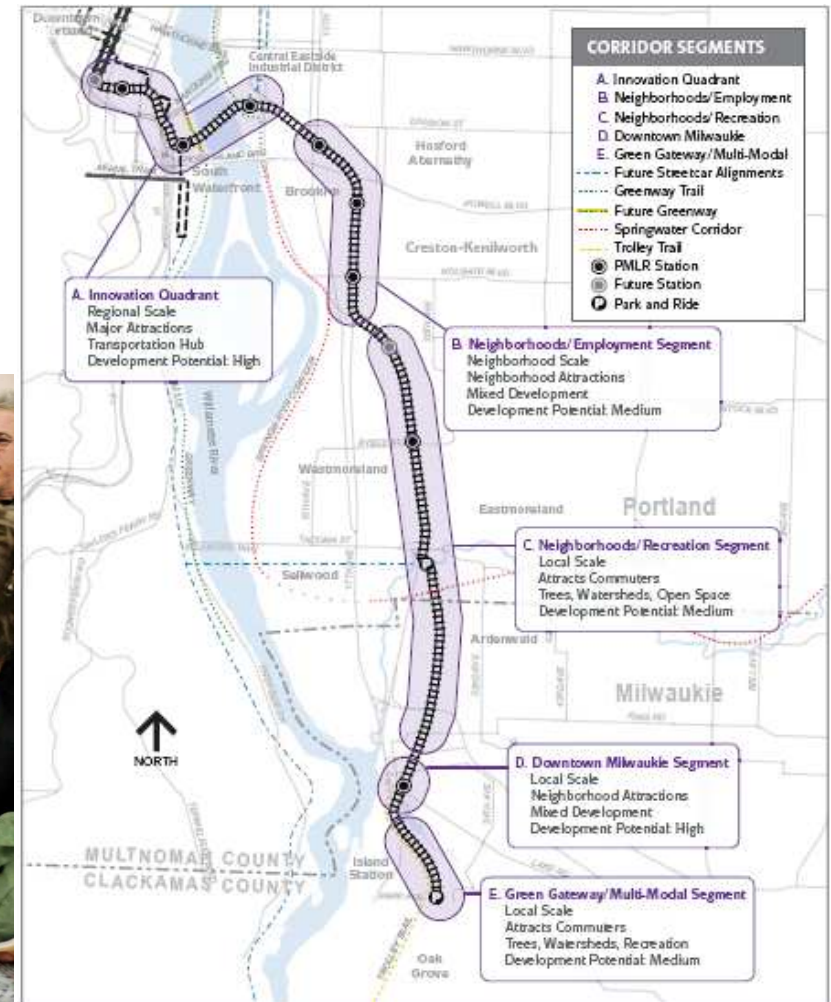
But the community involvement is the “How”



# Portland-Milwaukie Light Rail: Tom Sawyer had it right

**Creating a Shared Vision-** Bringing neighbors together to craft how transit will serve their communities

A Collection of Stories; connected by transit



# Portland-Milwaukie Light Rail: Tom Sawyer had it right

The “Not So Little Idea”:

The Portland/Milwaukie light rail alignment shall weave themselves into the natural, economic and human fabric of the adjacent neighborhoods more than any TriMet alignment before. For, rather than TriMet distinguishing this alignment as a system *within Portland*, it will now *become* the city itself.

## THE MARKET SHED AT CLINTON



Possible Projects	Partners
Market Shed	TriMet, PBOT
• Bike Station	PDC General Fund, Private Development
• Incubator Space	
Fowell Blvd. Solar Canopy	Energy Trust of Oregon, Private
Carthage Bike Path to Bottoms near Court	TriMet, PBOT, Parks
Working Capital for Businesses	PDC General Fund
Station Improvements	PDC General Fund
Development Opportunities	Include Station Area in CES URK



# Portland-Milwaukie Light Rail: Tom Sawyer had it right



## Lesson Learned:

Active & early public involvement ensures the right project, in the right place, for the right price.



# Conclusion: Lessons Learned

1. You're creating experiences, not moving people; it's a trip not a destination
2. Use transit projects as a convener; forum for community issues, ideas, concerns
3. Listen; ask questions, listen some more
4. Consider deeply.... alternatives and understand your public's responses
5. Provide information for people to understand, absorb, and become engaged
6. Build contingent relationships; power of partnerships
7. Artfully consider engineering (both sides of the brain)
8. Build it well; so it sustains the community
9. Safety and security as a public and agency value; demonstrated at all levels
10. Make it fun for everyone, all the time (day & night, year round)

# Thank You!

[www.trimet.org](http://www.trimet.org)

[hastingb@trimet.org](mailto:hastingb@trimet.org)



TRI  MET